

PAUL R. NOLAND WASTEWATER TREATMENT FACILITY



This wastewater treatment plant is located at 1500 North Fox Hunter Road, Fayetteville, AR 72701. It opened in 1987. It was then, and now, a technologically advanced treatment facility designed to protect water quality that flows into the White River and then into Beaver Lake. Paul Noland was Mayor during this period and helped guide the project to successful completion.

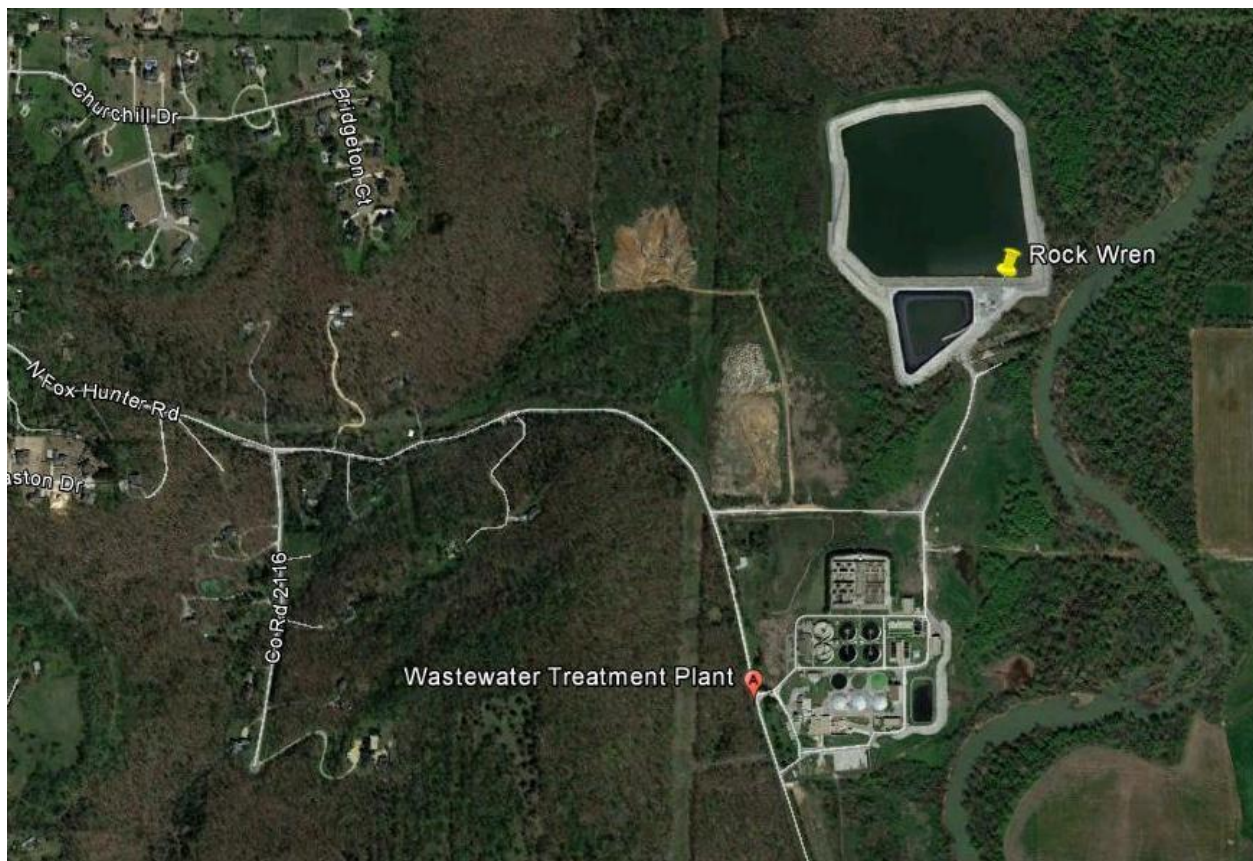
Birders are welcomed during regular business hours, Monday-Friday.



The plant has a gate. When you arrive there, use the call box and identify yourself as a birder. Personnel inside the plant will open the gate. As you exit, slowly approach the gate: it will open automatically as you approach.

The plant is located in the valley of the White River. Habitats include grassy fields, riparian woods, cane thickets, and a field used for disposal of concrete and other non-garbage waste. We found Say's Phoebe along the field bordering the river during a Northwest Arkansas Audubon Society field trip (February 2006).

One of the big attractions is a 25 acre holding pond used when the wastewater collection systems are overloaded by storm water inflows. This large pond has long been attractive to waterfowl, especially in winter. All kinds of ducks may be seen, including rarer ones like Long-tailed Duck (December 2005, November 2002). During low water conditions, shorebirds of many species may be seen here. Riprap along the pond levees supported Rock Wren during winter 2012-2013.



--Joe Neal February 2013